

ProFace X

Outdoor & Vandal-resistant Facial Recognition Terminal



ProFace X is a fully upgraded version of the ProFace product line, which is designed to deal with all kinds of scenarios. It's powered by the latest ZKTeco-customized CPU for running the intellectualized engineering facial recognition algorithm to boost up the performance in all aspects.

With its powerful core and the latest facial recognition algorithm, the ProFace X facial recognition capability has reached a new height in the biometrics industry with a maximum of 100,000 facial templates, facial recognition speed less than 0.3 sec per face, ultimate anti-spoof ability against almost all types of fake photos and videos attack .

Other than the powerful core, ProFace X is also equipped with the latest face capture system, which enables the terminal to recognize faces under extreme strong light conditions (50,000 lux), and a microwave detector to precisely evaluate the distance between the user and the device for waking up the terminal.

ProFace X comes with a robust design that can work in extreme weather conditions from -30°C to 60°C (-22°F to 140°F) ; The IP68 dust and waterproof standard and IK04 protection standard also enhance its outdoor durability.

ProFaceX supports video intercom via the mobile App ZSmart and the PC software ZKBioTalk. Also, the ProFace X integrates with the ONVIF video protocol to connect to the ONVIF NVR for video surveillance and recording. Moreover, ProFace X supports SIP Protocol connect to the indoor unit.

Features

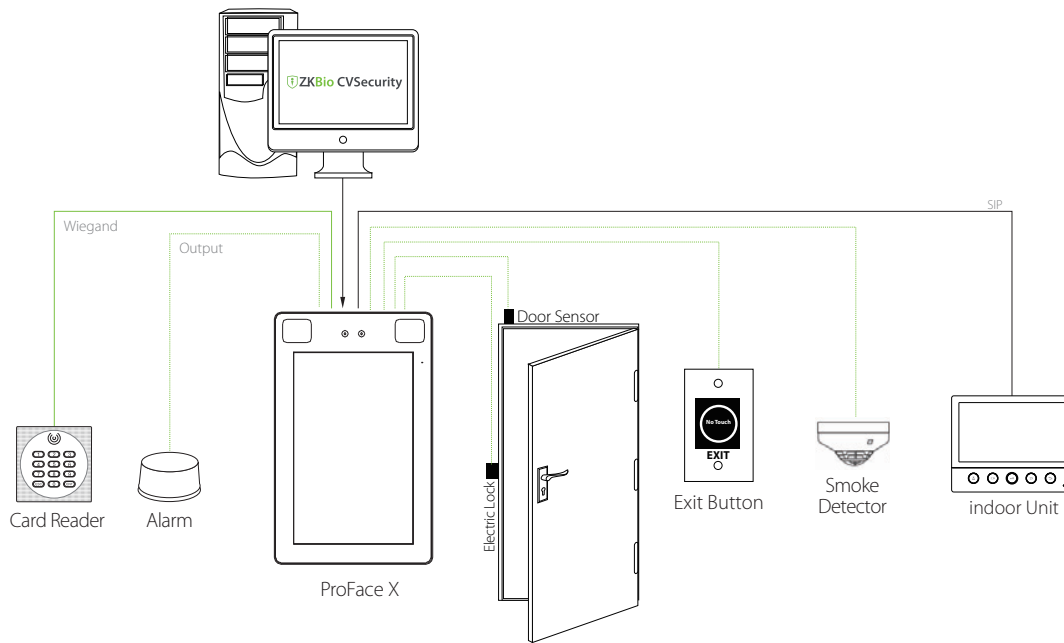
- G • Ultra-large capacity of facial templates; 1:N - 30,000 facial templates (standard), maximum 1:N - 100,000 facial templates (optional), 1:N-5,000 palm templates (customized)
 - Rapid facial recognition within 0.3s
 - Anti-spoofing algorithm against print attack (laser, color and B/W photos), videos attack, and 3D mask attack
 - Intelligent energy-saving design, precisely evaluates the distance up to 2.5m (8.2ft) between the user and the device by a microwave detector before waking up the recognition terminal
 - Integrated 125kHz prox card reader (optional IC Card)
 - 2MP starlight CMOS sensor camera with WDR function, which enables the terminal to recognize faces under extreme lighting conditions (0.5 lux – 50,000 lux)
 - G • Video intercom ZKBioTalk / APP: ZSmart
 - G • ONVIF Protocol, SIP Protocol
 - G • Dynamic QR code with ZKBio CVSecurity Mobile APP
 - Supplement lighting with adjustable brightness
- 2.1.9
- 8" touch screen with 400 lux, which offers high visibility under strong and direct light
 - Multiple communication methods: TCP/IP, RS485, RS232, Wi-Fi (optional)
 - IP68 dust-proof and waterproof standard and IK04 protection standard
 - Wide range of working temperature (-30 ~ 60°C; -22 ~ 140°F)

Specifications (G: GL Exclusive Feature)

<p>Capacity</p> <ul style="list-style-type: none"> G Faces 30,000 (1:N) 100,000(Optional) G Palm 5,000(Customized) G Users / Cards 50,000 Transactions 1,000,000(Optional 2,000,000) User Photos 30,000 Event Photos 10,000 <p>* Note: ProFace X with the optional 100,000 faces capacity, it does not support the following features: photo saving function, video intercom function, palm recognition function.</p> <p>Compatibility</p> <p>Security Relay Box Wiegand / RS485 Slave Reader with FP / RFID / Barcode / QR-code</p> <ul style="list-style-type: none"> G Software: ZKBio CVSecurity / ZKBioTalk G Mobile App: ZSmart(Optional) <p>Hardware</p> <p>2.1.1 G 1GHz Dual Core Customized Computer Vision CPU</p> <p>2.1.2 G 1G RAM / 8G Flash 2.1.3 8" (400lux) IPS Touch LCD</p> <ul style="list-style-type: none"> G 125KHz EM Reader / 13.56MHz MF(Optional) 2MP WDR Low Light Camera 2.1.7 Adjustable Light brightness LED Hi-Fi Voice Microphone Distance Detection Sensor Reset Button and Tamper Switch 	<p>Access Control Interface:</p> <p>Lock Relay Output Alarm Output / Auxiliary Input Exit Button / Door Sensor</p> <p>Special Functions:</p> <ul style="list-style-type: none"> G IP68 & IK04 G 0.3s High Speed Face Verification Live Face detection Communication Https Encrypted Optional G Event Snapshot G Video intercom G ONVIF Protocol (Compatible with Profile S, Profile T, Profile G, Profile C, Profile Q & Profile A) G SIP Protocol (Compatible with VT07-B01,Optional) <p>Standard Functions:</p> <p>Access Levels, Groups, Holidays, DST, Duress Mode (Password), Anti-Passback, Record Query, Custom Wallpaper & Screen Saver, Tamper Switch Alarm</p>	<p>Communication</p> <p>TCP/IP Wiegand Input / Output Wi-Fi (Optional) 2.1.5 RS485* / RS232*</p> <p>Additional Info</p> <ul style="list-style-type: none"> G ZKFace 3.9 & ZKPalm 12.0(Customized) 2.1.8 Operating Temperature: -30°C ~ 60°C, (-22°F~ 140°F) Operating Humidity: ≤93% Storage Temperature: -40°C ~ +65°C Storage Humidity: ≤93% Net Weight: 853g Dimensions (L*W*D): 227*143*26mm <p>Power</p> <p>Operating Voltage 12V DC Current Draw < 2,000mA</p>
--	---	--

* Note: RS232 is for external printer and RS485 is for RS485 readers.

Configuration



Dimensions (mm)

